

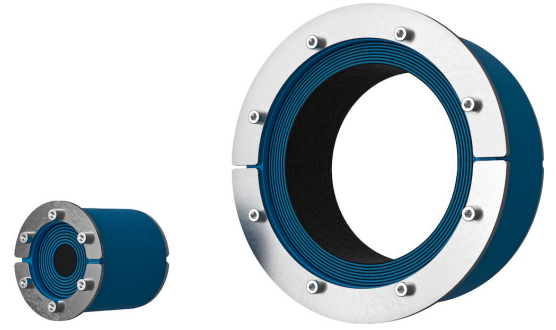


Roxtec RS -tiiviste

Läpivientiiiviste yhdelle kaapelille tai putkelle.

Roxtec RS on metalliholkkien tai valmiiden aukkojen kautta reititettävien kaapeleiden tai putkien tiiviste. Läpivientiiivisteessä on kaksi puoliskoa, joissa on irrotettavia kerroksia. Ne sopivat erikokoisiin kaapeleihin ja putkiin. Helppo asentaa kaapeleihin ja putkiin.

- Jyrsijäsuojattu
- Helppo ja nopea asennus



Tuotteen ominaisuudet



Paloluokiteltu



Vesitiivis



Kaasutiivis

Asennusrakenne



Metalli



Betoni

Asennustyyppi



Olemassa oleva reikä



Olemassa oleva holkki

Luokitukset ja sertifiointit

Paloluokka

- A-luokka IMO 2010 -standardin palokoe-koodin (IMO 2010 FTP Code) mukaan
- E/EI-luokitus standardin EN 13501 mukaan
- E/EI-luokitus standardin EN 45545 E30 mukaan
- F/T-luokitus standardin UL 1479 mukaan
- H-CLASS IMO 2010 FTP Code + -hiilivetypalon kuormituskäyrän mukaan
- Tulisuihku ISO 22899-1:n ja OTI 95634:n mukaan

Tiiviys

- Kaasutiivis: 2,67 bar (katastrofi)
- Vesitiivis: 4 bar (katastrofi)

Tiivistyskomponenttien tiedot

Tiivistyskomponentit



RS -tiiviste



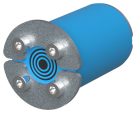
Roxtec-asennusrasva

Lisätietoja on osoitteessa [roxtec.com](https://www.roxtec.com).

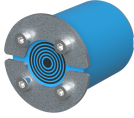


Valmiiksi määritetyt läpivientisarjat

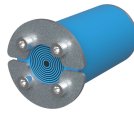
mm/kg



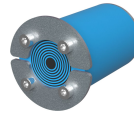
RS 25 AISI316



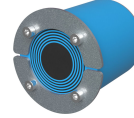
RS 31 AISI316



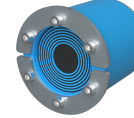
RS 43 AISI316



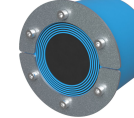
RS 50 AISI316



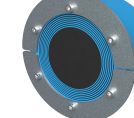
RS 68 AISI316



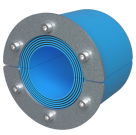
RS 75 AISI316



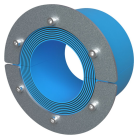
RS 100 AISI316



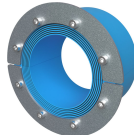
RS 125 AISI316



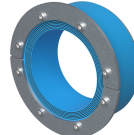
RS 100 AISI316 WOC



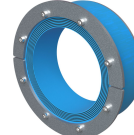
RS 125 AISI316 WOC



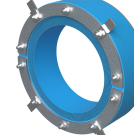
RS 150 AISI316 WOC



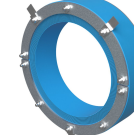
RS 175 AISI316 WOC



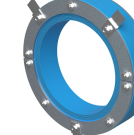
RS 200 AISI316 WOC



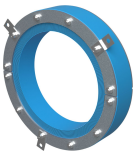
RS 225 AISI316 WOC



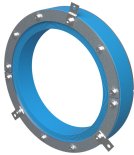
RS 250 AISI316 WOC



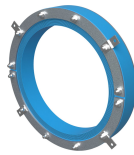
RS 300 AISI316 WOC



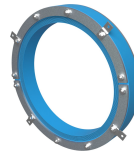
RS 350 AISI316 WOC



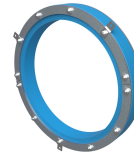
RS 400 AISI316 WOC



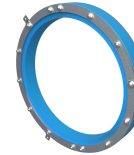
RS 450 AISI316 WOC



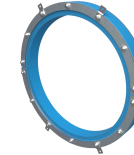
RS 500 AISI316 WOC



RS 550 AISI316 WOC



RS 600 AISI316 WOC



RS 644 AISI316 WOC

Otsikko	Kokoonpano	Aukon mitat Ø	Paino	Tuotenro
RS 25 AISI316	1x (3.6-12.0)	25 - 26	0.08	RS00100251023
RS 31 AISI316	1x (4.0-17.0)	31 - 32	0.09	RS00100311023
RS 43 AISI316	1x (4.0-23.0)	43 - 45	0.24	RS00100431023
RS 50 AISI316	1x (8.0-30.0)	50 - 52	0.31	RS00100501023
RS 68 AISI316	1x (26.0-48.0)	68 - 70	0.5	RS00100681023
RS 75 AISI316	1x (24.0-54.0)	75 - 77	0.6	RS00100751023
RS 100 AISI316	1x (48.0-70.0)	100 - 102	1	RS00101001023
RS 125 AISI316	1x (66.0-98.0)	125 - 127	1.6	RS00101251023
RS 100 AISI316 WOC	1x (48.0-70.0)	100 - 102	0.8	RS00001001023
RS 125 AISI316 WOC	1x (66.0-98.0)	125 - 127	1.4	RS00001251023
RS 150 AISI316 WOC	1x (93.0-119.0)	150 - 152	1.6	RS00001501023
RS 175 AISI316 WOC	1x (119.0-145.0)	175 - 177	2.3	RS00175750021
RS 200 AISI316 WOC	1x (138.0-170.0)	200 - 203	2.7	RS00200750021
RS 225 AISI316 WOC	1x (151.0-181.0)	225 - 228	3.2	RS00002250021
RS 250 AISI316 WOC	1x (176.0-206.0)	250 - 253	3.3	RS00002500021
RS 300 AISI316 WOC	1x (206.0-236.0)	300 - 303	5.7	RS00003000021
RS 350 AISI316 WOC	1x (244.0-286.0)	350 - 353	7.2	RS00003500021
RS 400 AISI316 WOC	1x (294.0-336.0)	400 - 403	9.4	RS00004000021
RS 450 AISI316 WOC	1x (344.0-386.0)	450 - 453	10.7	RS00004500021
RS 500 AISI316 WOC	1x (394.0-436.0)	500 - 503	13	RS00005000021
RS 550 AISI316 WOC	1x (444.0-486.0)	550 - 553	14.4	RS00005500021
RS 600 AISI316 WOC	1x (494.0-536.0)	600 - 603	15.7	RS00006000021
RS 644 AISI316 WOC	1x (538.0-580.0)	644 - 647	17	RS00006440021



The product information provided by Roxtec does not release the purchaser of the Roxtec system, or part thereof, from the obligation to independently determine the suitability of the products for the intended process, installation and/or use.

Roxtec gives no guarantee for the Roxtec system or any part thereof and assumes no liability for any loss or damage whatsoever, whether direct, indirect, consequential, loss of profit or otherwise, occurred or caused by the Roxtec systems or installations containing components not manufactured by an authorized manufacturer and/or occurred or caused by the use of the Roxtec system in a manner or for an application other than for which the Roxtec system was designed or intended.

Roxtec expressly excludes any implied warranties of merchantability and fitness for a particular purpose and all other express or implied representations and warranties provided by statute or common law. User determines suitability of the Roxtec system for intended use and assumes all risk and liability in connection therewith. In no event shall Roxtec be liable for indirect, consequential, punitive, special, exemplary or incidental damages or losses.

The Roxtec products are offered and sold in accordance with the conditions of the Roxtec General Terms of Sales. The latest version of the Roxtec General Terms of Sales can be downloaded from <https://www.roxtec.com/en/about-us/about-roxtec/general-terms-of-sales/>

We reserve the right to make changes to the product and technical information without further notice. Any errors in print or entry are no claims for indemnity. The content of this publication is the property of Roxtec International AB and is protected by copyright.

This document was generated on: 2024-04-06